



# BAHTERA TEGUH

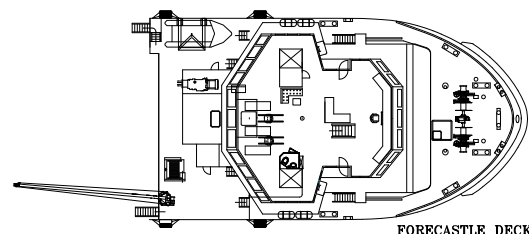
DP 1 Anchor handling tug supply vessel  
86 Metric ton bollard pull  
160 Metric ton line pull winch



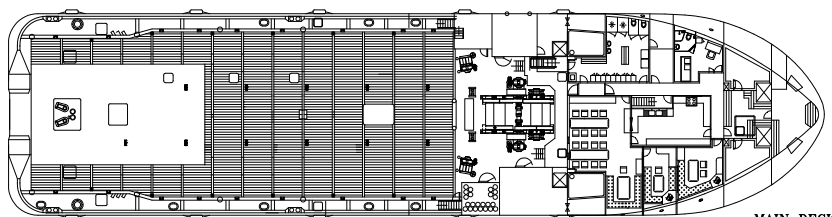
This anchor handling tug supply vessel has been designed by CONAN WU to carry out general services for the offshore industry. It is fitted with a class DP1 system, Fi-Fi I system, and easy to upgrade for standby/service duties.

It is equipped with a waterfall double drum winch with large capacity suitable for towing, anchor handling and offshore terminal operations.

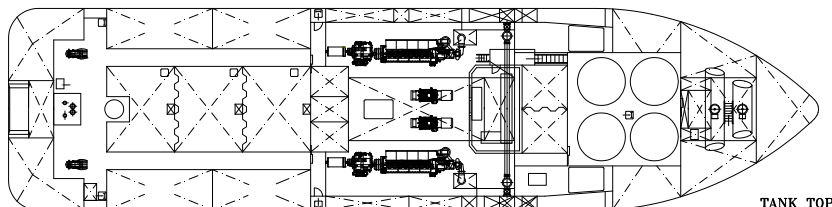
« Photo: BOURBON THERA Sistership of BAHTERA TEGUH »



FORECASTLE DECK



MAIN DECK



TANK TOP

ANCHOR HANDLING TUG SUPPLY VESSEL

## REGISTRATION

Vessel Name: **BAHTERA TEGUH**

Type: **AHTS vessel CONAN WU Design**

Year: **2007**

Flag: **Labuan, Malaysia**

Owner: **Bourbon Offshore Asia**

Builder: **Dayang Shipyard - China.**

Class: **BV. Class 1, + Hull, + Mach, Tug, Supply Vessel, Unrestricted navigation, Fire Fighting Ship I Water spray, DYNAPOS AM/AT (Class 1), + AUT-UMS.**

Optional: **Special Service/Stand by Rescue Vessel.**

Updated: 18-11-2013





### MAIN PARTICULARS

#### DIMENSIONS

Length overall: .....64.80 m  
 Breadth moulded: .....16.00 m  
 Depth: .....5.80 m  
 Draft: .....4.90 m  
 Deadweight: (at max draft) .....1,611 t  
 Bollard pull: .....86 t  
 Gross / Net tonnage: .....2,014 / 604

#### CAPACITIES

Deck area: (5.0 t/m2) .....( 33 x 13 m ) 420 m2  
 Deck cargo: .....800 t  
 Fuel oil: .....607 m3  
 Drill water: .....464 m3  
 Fresh water: .....446 m3  
 Liquid mud / Brine: .....392 m3  
 Dry bulk/Cement: (4 tanks).....170 m3  
 Chain locker / Brine / Mud: .....112 m3  
 Dispersant: .....20 m3  
 Foam: .....18 m3

#### DELIVERY RATES

Fuel oil:.....120 m3/h at 7 bars  
 Drill water:.....120 m3/h at 7 bars  
 Fresh water:.....120 m3/h at 7 bars  
 Liquid mud:.....2 x 75 m3/h at 7 bars  
 Dry Bulk/Cement:.....2 x 20 m3/min at 5.6 bars

#### ACCOMMODATIONS

Accommodations for:.....28 pers  
 Single cabins:.....6  
 2 man cabins:.....5  
 4 man cabins:.....3  
 Hospital:.....1  
 2 mess / day rooms, laundry, galley, stores, office, provision rooms  
 Fully air conditioned.

### MACHINERY / PERFORMANCE

#### PROPULSION - MACHINERY

Main engines: (MAK).....2 x 2,640 kW  
 Propellers: .....2 type CP, diam: 2,900 mm in nozzles  
 Bow thrusters: .....2 x 500 kW  
 Stern thruster: .....500 kW  
 Shaft generators: .....2 x 1,600 kVA  
 Auxiliary generators: .....2 x 440 kVA  
 Emergency generator: .....110 kVA

#### SPEED / CONSUMPTION

Maximum speed (100%):.....30 m3/day at 14 knots  
 Service speed (80%):.....25 m3/day at 12 knots  
 Economic speed (50%):.....15 m3/day at 9 knots

### EQUIPMENT & ELECTRONICS

#### DECK EQUIPMENT

Main winch: .....1 Electro-Hydraulic low pressure winch  
 Composed of 2 Declutchable drums in Waterfall arrangement each equipped with:  
 Drum size: .....900/2,090 mm x 1,800 mm length  
 Drum capacity: .....1,500 m of 2" ¼ steel wire rope  
 Rated pull: .....160 t on first layer at 0-8.4 m /min  
 Brake holding load: .....250 t on first layer  
 Combined spooling device for both drums.  
 2 cable lifters 3" and 2" ½.  
 Windlass: .....1 combined mooring and windlass winch  
 Storage reel: ..1 electro-hydraulic with 1 drum/1,500m of 2" ¼ wire  
 - Drum size: .....800 / 2,200 mm diam x 1,500 mm length  
 - Pull at 1 st layer: .....12t at 0-18 m/min  
 Stern roller: .....diam; 1,500 mm, length; 4,000 mm. 250 mt SWL  
 Towing pins: .....1 pair of vertical / retractable. 200 t SWL  
 Shark jaws: .....2 of 250 t SWL  
 Tuggers: .....2 x 11 t at 25 m/min  
 Capstans: .....2 x 10 t at 14 m/min  
 Deck provisions crane: .....1.7 t at 14 m

#### DYNAMIC POSITIONING SYSTEM (DP1)

Type: .....Class DP1  
 - Sensors and monitoring as per class I requirements.

#### ELECTRONICS

##### NAVIGATION

2 radars  
 1 gyrocompass  
 1 magnetic compass  
 1 digital echo-sounder  
 1 speed log  
 1 autopilot system  
 1 GPS

##### COMMUNICATION

1 radio system compliant with GMDSS A3 including:  
 1 SSB Duplex DSC  
 2 INMARSAT C  
 2 VHF, EPIRB, SART, NAVTEX  
 1 Iridium system, 1 INMARSAT F  
 Automatic exchange telephone system with facilities in each room

#### SPECIAL EQUIPMENT

Fire-Fighting (Fi-Fi 1) 2,400m3/h: .....2 pumps 1,500 m3/h each (with foam capacity: 300 m3/h) ...2 water monitors of 1,200 m3/h Deluge system.

Life saving equipment, MOB boat (rescue boat) with davit.  
 Standby Rescue Equipment for 150 survivors: (optional).

Pushing rubber bow fender.

*All particulars believed to be correct but not guaranteed*